

Coda 03

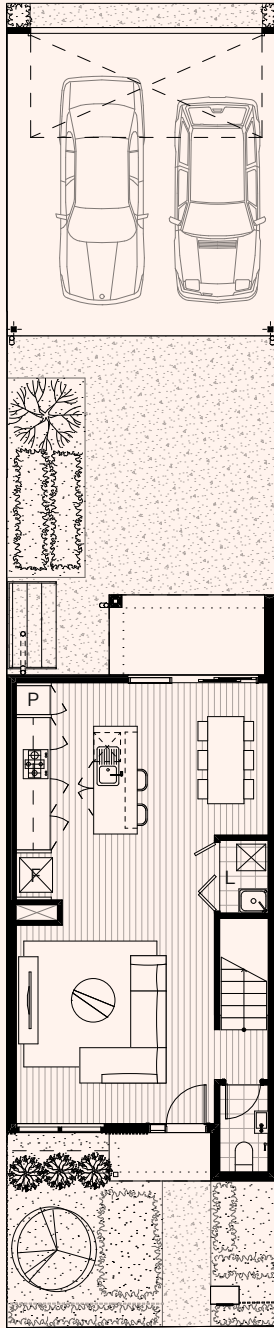
# PHOENIX

AT ALARAH

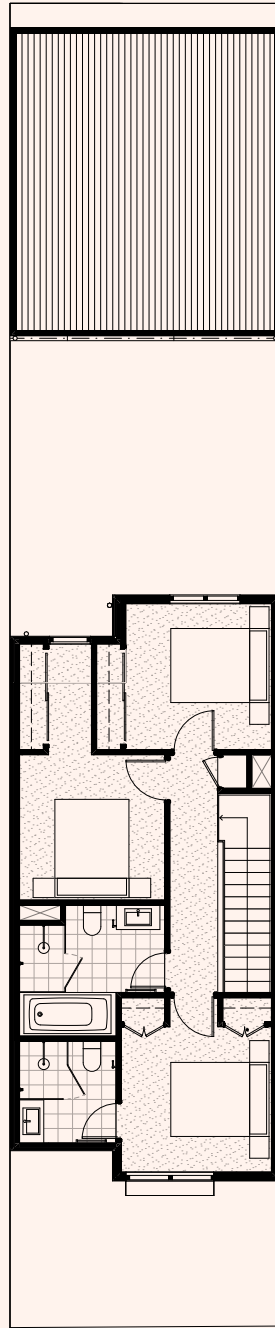
Cranbourne West

**Legend**

- P Pantry
- F Fridge
- L Laundry



Ground



First

## Coda 03

3 Bed, 2.5 Bath, 2 Garage

Area	
Ground floor	54.2m <sup>2</sup>
First floor	64.2m <sup>2</sup>
Carport	35.5m <sup>2</sup>
Internal area	153.9m <sup>2</sup>
Porch	3.0m <sup>2</sup>
Alfresco	5.6m <sup>2</sup>
External area	8.6m <sup>2</sup>
<b>Total area</b>	<b>160.9m<sup>2</sup></b>

**Enquiries**

For enquires contact  
 Gabby Krayz  
 gabby@wolfdene.com.au  
 Mobile 0449 899 700  
 Jaymee Wolff  
 jaymee@wolfdene.com.au  
 Mobile 0439 333 217